

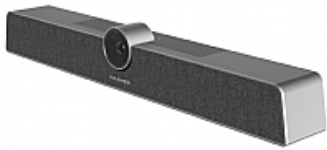


# kramer

## K-Bar

12MP camera, 120° FOV, 5x digital zoom, 6 array MEMS microphone, 8w speaker, AI-powered auto-framing & voice-tracking

---



Compact, all-in-one video and audio communication bar

Quickly start collaborating, with simplified, professional audio and video. With the optimum blend of microphones, speakers and video camera, all in a small and sleek device, the K-Bar delivers everything needed for hybrid interaction in small meeting spaces

## FEATURES

---

### A perfect fit for small rooms -

Compact collaboration bar and flexible mounting options allow optimized use of limited space – Ideal for huddle rooms and small rooms with space for up to six people

All-in-one format and multiple connection options enable fast, space-saving installations, with just a single cable

### Optimized video and audio -

12 MP camera with 120° viewing angle and 5x digital zoom covers most areas of a small room

Auto-framing dynamically adjusts the field of view to optimally capture all participants

Ability to pre-set two camera positions saves time in meetings and helps ensure the best view of participants

Integrated 6-element microphone and 8-way speakerphone, with automatic noise reduction and gain control, ensure all participants can hear and be heard clearly

All functions are easily controlled via the handy remote control, including zoom in/out, camera position selection, audio volume



# kramer

## TECHNICAL SPECIFICATIONS

---

Ports	1 USB-C 2.0 On a USB-C connector AUX OUT On a 3.5mm mini jack
Camera	Pixel: 12M Max. Field of View (FOV): 120° (D) Adjustable Angle (Manual): ±15° (Up/Down) Focus Mode: Fixed focus Focus Distance: 2m Resolution and Frame Rate: H.264/MJPEG: 3840x2160; 2560x1440; 1920x1080; 1280x720; 1024x576; 960x540; 800x600; 640x480; 640x360; 480x270; 352x288; 320x240 YUY2: 640x480; 640x360; 480x270; 352x288; 320x240 Output Format: MJPG/YUY2/H.264
Sound Reinforcement	Sound Channel 1.0: Sound Channel 1.0 Output Power 1x8W: Output Power 1x8W
Microphone	Quantity: 6 Voice Pickup Distance: Up to 8 meters
Controls	Remote control
Power	Consumption: 12V DC, 1A max Source: 12V DC, 2A Standby Power: ≤0.5W
Environmental Conditions	Operating Temperature: 0° to +40°C (32° to 104°F) Storage Temperature: -20° to +60°C (-4° to 140°F) Humidity: 10% to 90%, RHL non-condensing Altitude: Below 5000 meters
Regulatory Compliance (Standards Compliance)	Safety: CE, FCC Environmental: RoHs, WEEE
Enclosure	Type: Aluminum
Accessories	Included: 1 USB-C cable, remote control, power cord and adapter, lens cover, wall bracket kit, screws set
Product Dimensions	46.00cm x 9.70cm x 7.30cm (18.11" x 3.82" x 2.87" ) W, D, H
Product Weight	1.1kg (2.3lbs) approx
Shipping Dimensions	53.00cm x 16.50cm x 15.70cm (20.87" x 6.50" x 6.18" ) W, D, H
Shipping Weight	2.4kg (5.2lbs) approx

