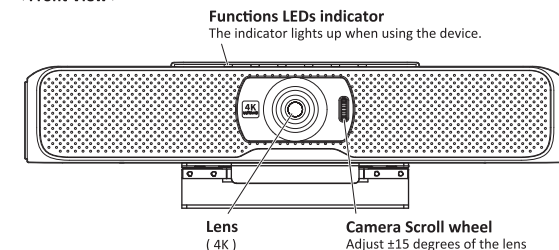


Video Conference Camera with Expansion Microphone(s)

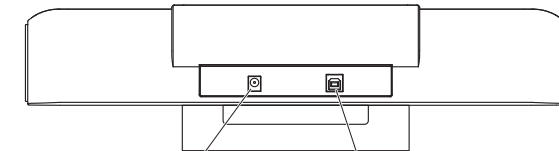
Quick Start Guide
V02
202204

Controls and Functions

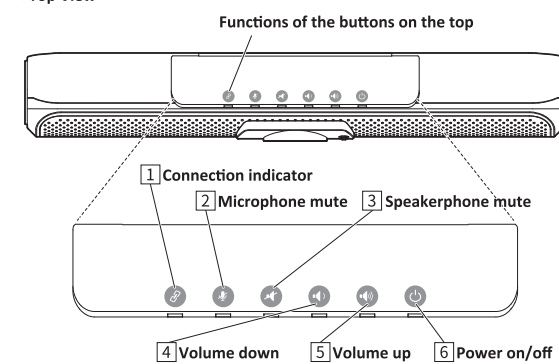
< Front View >



< Rear View >

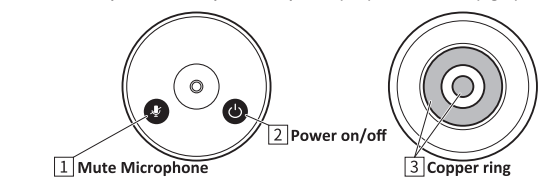


< Top View >



Buttons	Indicator status	Functions
1 Connection indicator	White LED lights Blue LED flashes	Connected to PC successfully via USB Disconnected
2 Microphone mute	Red LED lights	All the mics mute
3 Speakerphone mute	Red LED lights	Speakerphone mute
4 Volume down	White LEDs decrease progressively	Volume down
5 Volume up	White LEDs increase progressively	Volume up
6 Power on/off	Blue LED lights Blue LED off	Press 3 seconds to power on Press 3 seconds to power off

< Wireless Expansion Microphones. Top View(left), bottom View(right) >



Buttons	Functions
1 Mute Microphone	Microphone mute
2 Power on/off	Press 3 seconds to power on/off
3 Copper ring	When using the charging tray, the charging copper ring acts as the charging interface. Charging copper ring contacts spring probe for charging

Expansion mics indicators

Indicator status	Working status of the expansion mic
Blue LED lights	Expansion mic connected
Blue LED flashes	Expansion mic disconnected
Red LED lights	Microphone mute or is charging
Red LED flashes	Low battery
Purple LED lights	Expansion mic full charged

Battery info

Expansion mic	Battery	Charging time	Standby time	Working time
	800mAh	1 hours	6 months	8 hours

Notes-Tips

1) The 4K camera supports standard UVC protocol.

Lens	4K
EPTZ	3x
HOV	105.6°
Effective pixel	8.0 Megapixel
Sensor	1/2.8" SONY CMOS
Interface	USB2.0
Other	Scene Adaptation(AI), Picture in Picture(PIP)

2) The audio output of this device use the same USB interface with video and supports the standard UAC protocol. All the software which supports the UAC protocol can collect the audio of this device.

3) Daisy-chain max up to 4 wireless expansion microphones connect to main unit via RF2.4G transmission. Each expansion microphone provides 3 meters pick up range. To ensure the call quality and echo cancellation effect, please do not move the expansion microphone after placing it on the table. At the same time, expansion microphones need a distance at least 1 meter from the speaker.

4) The main unit has an internal auxiliary microphone for emergency use when the expansion mics are out of power. Expansion mics are recommended for the best call experience. When internal mic is turned on, all the expansion mics will be automatically disabled.

Combination Key Function

1) Chinese, English and ringtone switching

Press and hold for 5 seconds to switch prompt tone between Chinese, English and ringtone.

2) Prompt tone ON/OFF

Prompt tone is turned on by default. Press and hold for 5 seconds to turn ON/OFF.

3) Enable or disable the internal microphone

Press and hold for 5 seconds to enable or disable the internal mic.

4) Remote upgrade mode

(This function needs the support of the manufacturer, please do not use it under normal circumstances)
Press and hold for 5 seconds to enter remote upgrade mode, the sky blue indicator of all buttons light.

Press and hold for 5 seconds to exit the upgrade mode.

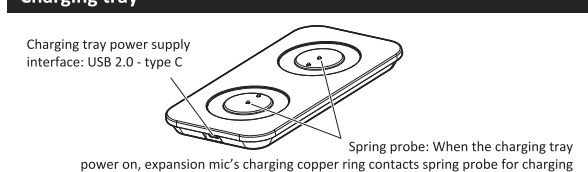
Pairing Wireless Microphones

Turn on the expansion microphone, the indicator light flashes blue. Press the microphone mute button and the indicator light turns red. Put the expansion microphone close to the main unit. Press and hold the microphone mute button for 10 seconds. After the indicator light stops flashing, the wireless microphone is successfully paired.

Music Mode

Press the microphone mute button of the main unit, then all the microphones are disabled. Now only the speaker works and enters the music mode, and it is the stereo play mode.

Charging tray



What is content in package ?

- ①Video conference camera 1
- ②User's manual 1
- ③Expansion mics 3
- ④Charging tray 1
- ⑤Bracket and screws 1
- ⑥USB 2.0 cable 5M 1
- ⑦Power supply of the camera 1
- ⑧Power supply of the charging tray 1
- ⑨USB - type C cable 1
- ⑩Remote control (no battery) 1

Remote control's functions

Buttons	Functions
1 Power on/off	Power on/off
2 Zoom out	Camera zoom out
3 Zoom in	Camera zoom in
4 Camera functions' menu	Camera functions' menu (center) EPTZ control (up, down, left, right)
5 Microphone mute	Microphone mute
6 Speakerphone mute	Speakerphone mute
7 Volume up/down	"+" volume up; "-" volume down

Note: If the remote control is not available, maybe the batteries ran out. Please change the new batteries(AAA*2pcs).

Scene Adaptation (AI)

The 4K camera supports scene adaptation function, automatically moves the lens and adjusts the zoom to comfortably frame meeting participants in rooms of all shapes and sizes.

- Press "Camera functions menu" (center), select "Image".

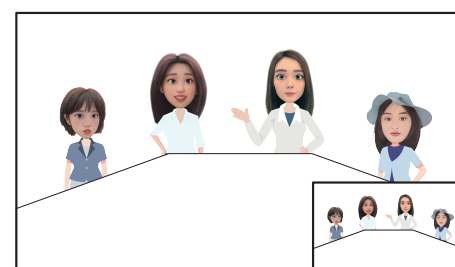
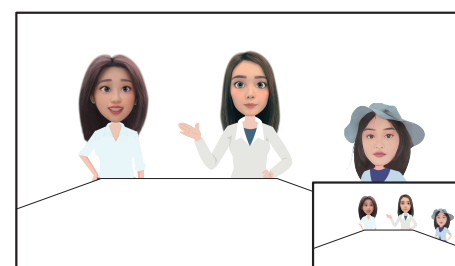
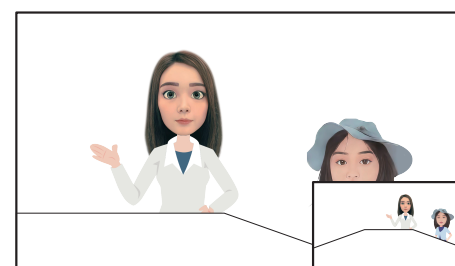
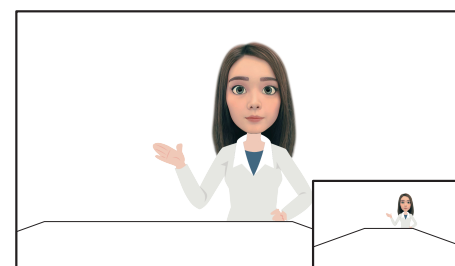
Image Setup

Exposure	->
Color	->
Image	->
Information	->
Language	English
OSD Mirror	101M Q20
Restore Defaults	->

Image

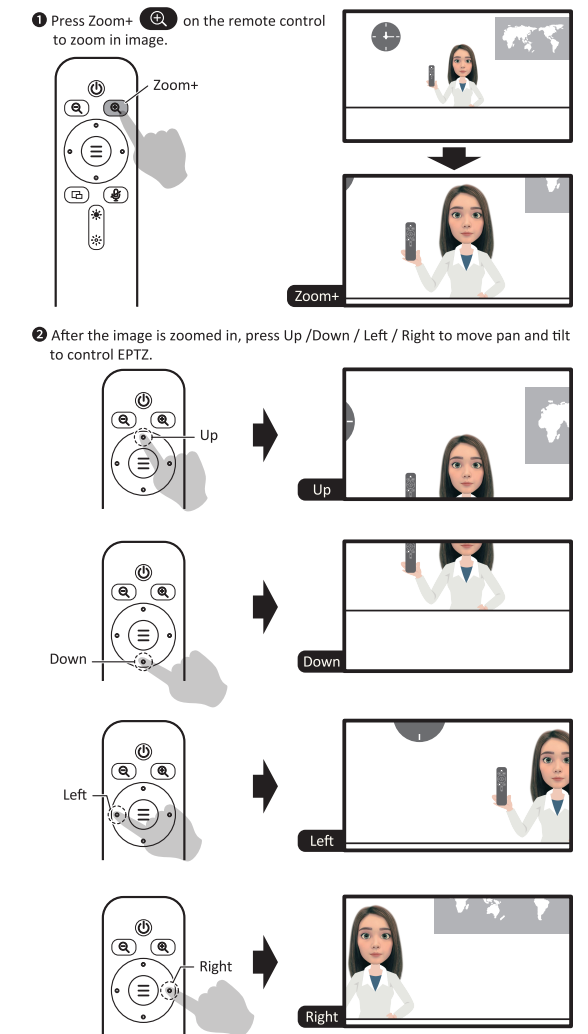
Image Flip	Off
Frame	30
Image Mode	Normal
PIP	Off
Scene adaptation	On
Screen mode	Horizontal
Back	<-

- Select "Scene adaptation" to "On".



EPTZ

The 4K camera supports EPTZ 3x digital zoom, while users zoom in the image, then can move Up/ Down / Left / Right of the image.



Picture in Picture(PIP)

The 4K camera supports Picture in Picture(PIP) function, while EPTZ zooms in close-up, users can view the panorama through the small picture-in-picture

- Press "Camera functions menu"(center), select "Image"

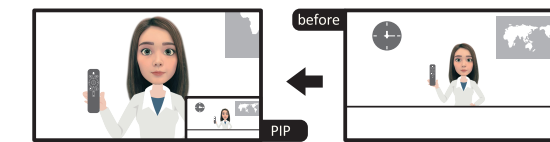
Image Setup

Exposure	->
Color	->
Image	->
Information	->
Language	English
OSD Mirror	101M Q20
Restore Defaults	->

Image

Image Flip	Off
Frame	30
Image Mode	Normal
PIP	On
Scene adaptation	On
Screen mode	Horizontal
Back	<-

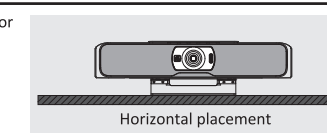
- Select "PIP" to "On", Picture in Picture function turns on, users can see small picture-in-picture window at the bottom of right.



Installation instruction

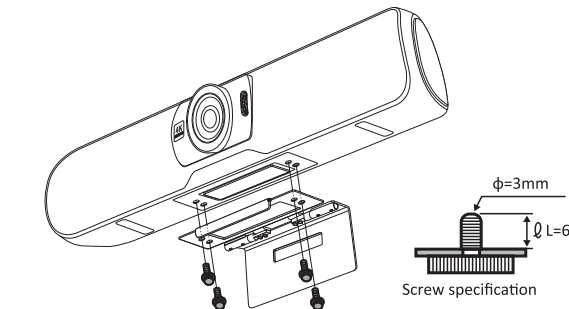
1 Desktop installation

Put the device on the table or screen and make sure the horizontal installation.



2 Bracket installation

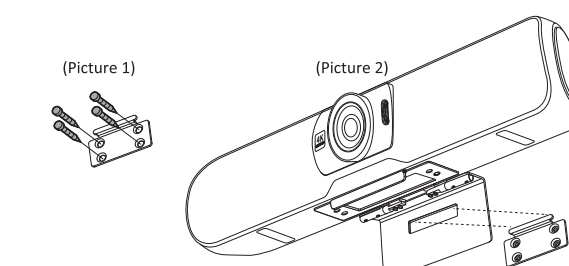
Screw the bracket to the screw hole at the bottom of the device and tighten it. Then the user can install a bracket at the bottom of the device. The screws of the bracket must meet the following specifications.



- Note:
- The bracket must be installed on the flat surface.
 - The screws on the bracket of the video conference camera can't be used on the higher place, just like the ceiling mount or partition mount.

3 Wall mount

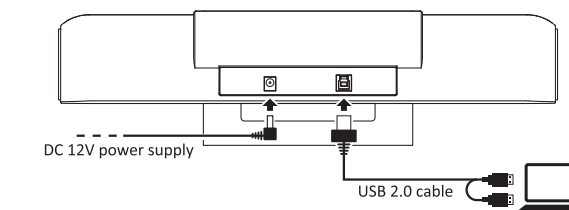
- Install the bracket at the bottom of the camera according to the 2 Bracket installation.
- Screw the bracket on the wall, refer to the following picture 1.
- Fasten the camera with bottom bracket on the wall mount, refer to the following picture 2.



Connect to the computer

1 Connect the 12V power supply to the camera.

Connect the standard USB cable with the camera and computer or other host computer. Refer to the following picture:

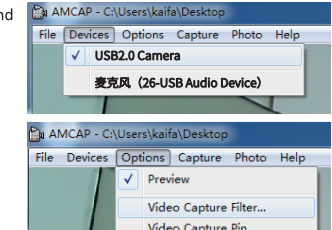


Video instruction

This device output video through USB. And it supports standard UVC protocol. All the software which support the UVC protocol can collect the video of this device.

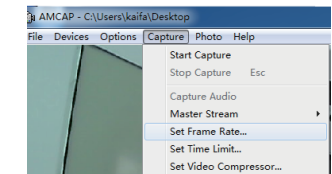
1) Demonstrate the video usage of the device with common software AMCAP.

- Open the AMCAP software and click the "Devices". Then choose the "USB2.0 Camera" (or the similar option).
- Click the Options and choose Preview. Then the user can preview the video. Refer to the right picture.

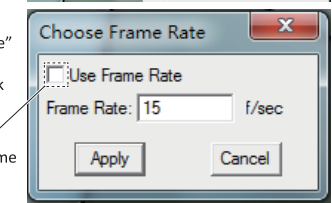


2) If the frame rate is not enough, the user can check whether the "Use Frame Rate" is ticked off. If yes, please cancel the tick

- Click the Capture and then choose Set Frame Rate

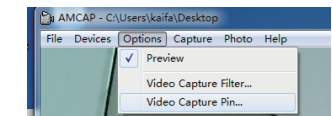


- In Choose Frame Rate, check whether the "Use Frame Rate" is ticked off. If yes, please cancel the tick. And then click the Apply

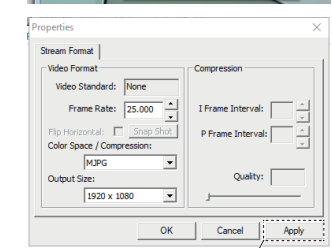


3) Change the different resolution and frame.

- Click the Options and choose Video Capture Pin...,



- Set the different resolution and frame according to the user's requirement. And then click Apply



How is working in meeting rooms ?

HOV: 105.6°

