

iSpeaker MD30

DANTE/ AES67 Microphone



Built-in high-performance embedded CPU, faster processing speed, refined structural design, exquisite surface treatment, fully reflecting the exquisite craftsmanship of modern industry, with power "hot swap" function, short-circuit protection function, the system unit provides DANTE digital audio output interface.

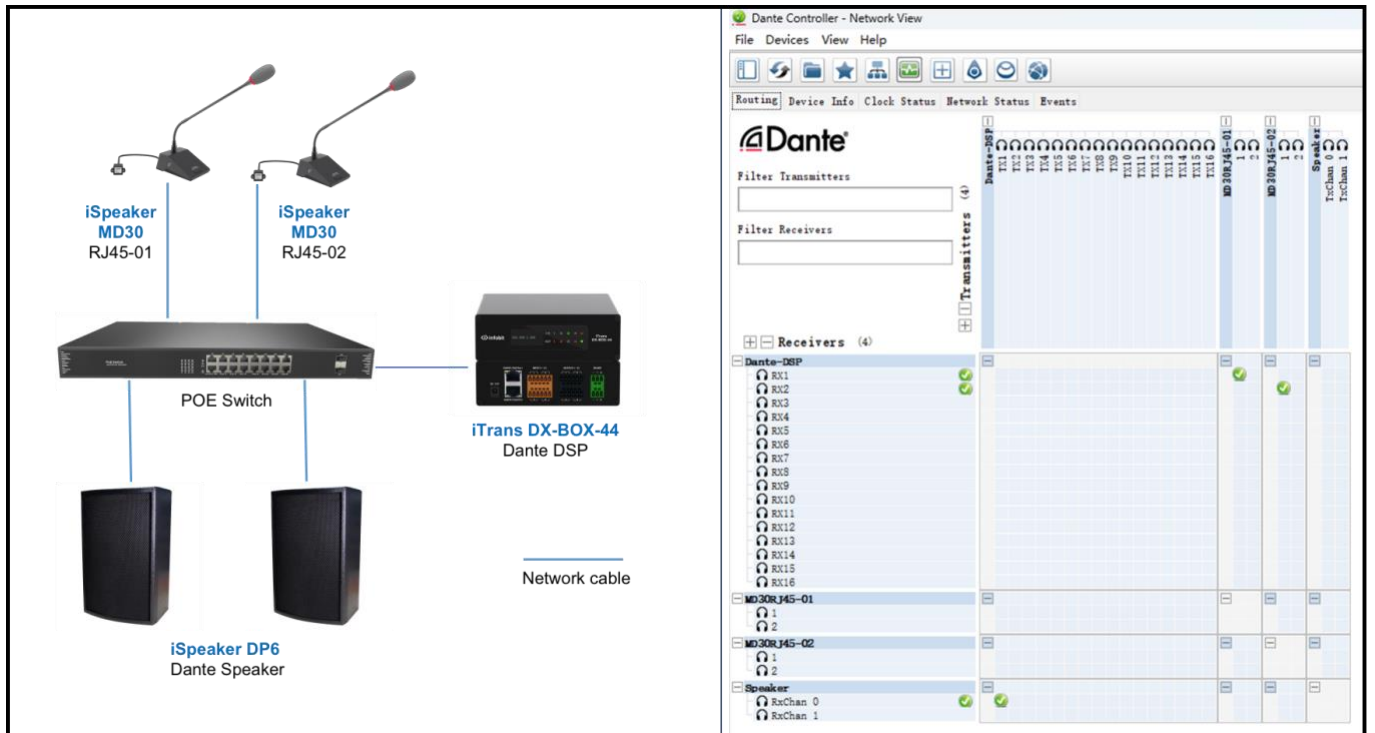
Features

1. Top gold film hi-fi microphone head, high-quality sound pickup guarantee, full metal microphone pole design.
2. High-sensitivity microphone head, ultra-cardioid pickup effect, the best pickup distance of 10-50CM.
3. With microphone physical on/off key.
4. System unit provides DANTE digital audio output interface.

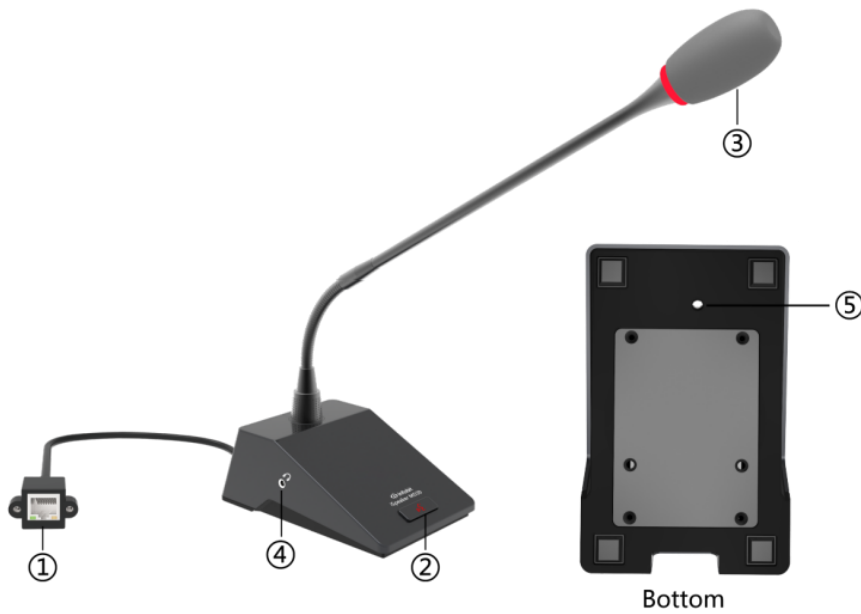
Datasheet

Pointing Characteristics	Super cardioid
Frequency Response	100-16kHz
Sensitivity	-40dB
Maximum Sound Pressure Level	110dB (3%T.H.D.@1kHz, 0dBSPL=2x10Pa)
Equivalent Noise Level	< 25dBSPL (A)
Overload Harmonic Distortion	<1%
Signal to Noise Ratio	65dB, 1kHz
Mic Rod Size	42cm
Base Size	149mmx94mmx55mm

Connection



Interfaces



- ① RJ45 Dante interface with POE function, for POE power and DANTE audio output
- ② Push button: turn the microphone mute/ unmute
- ③ Gooseneck Microphone: for sound pickup
- ④ 3.5mm earphone: to monitor the sound of the iSpeaker MD30
- ⑤ Volume adjustment knob (at bottom): Adjustable range 0dB-23dB

**The 3.5mm sound monitoring is available from April 01, 2023. All previous versions don't support.*